

CRYSTAL MTH

The flow meter for energy measurement

Application

The multijet flowmeter is used for energy measurement in heating and cooling systems with water temperatures up to 120°C. This well-proven multijet dry running unit is equipped with a hard metal-sapphire point bearing. Standard versions from Qp 2.5 to 10 m³/h with a transmitter at 10 l/pulse and can be mounted horizontally in falling or rising pipelines.



Features

- Mechanical multijet flowmeter
- Hydrodynamic measuring method
- Better than German PTB requirements
- Pulse transmitter with reed contact
- Dry running version with sealed roller counter
- Two-point hard metal-sapphire bearing
- Protective cover to shield against magnetic fields

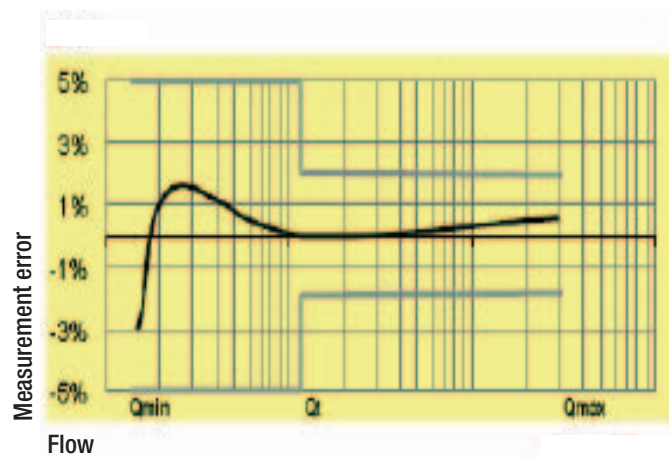
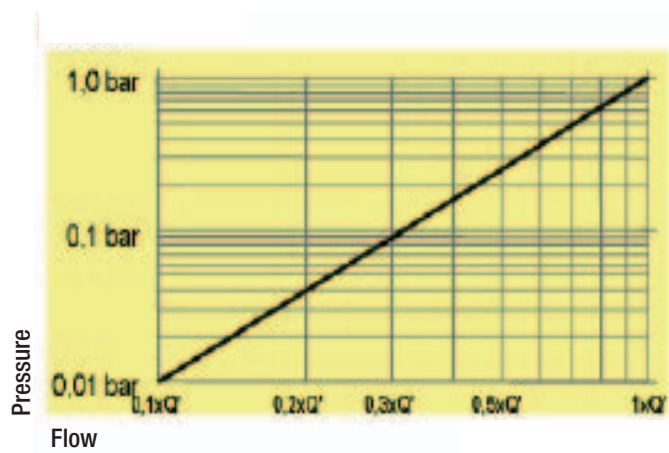
Benefits

- Does not depend on the conductivity of the medium; applications with water containing magnetite
- No inlet or outlet path required
- High accuracy, suitable for custody transfer
- Universal output signal
- Roller counter sealed off from sand, chalk and magnetite particles in water
- Low wear bearing to ensure long operating life
- Protection from magnetic fields

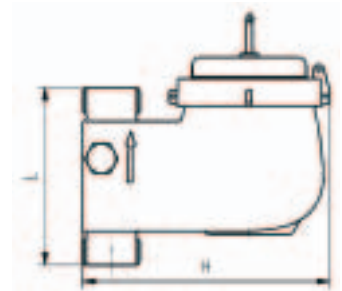
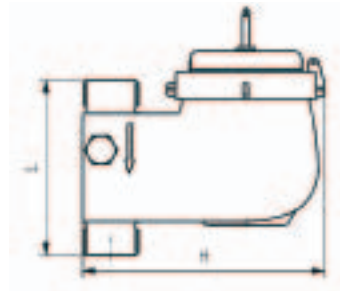
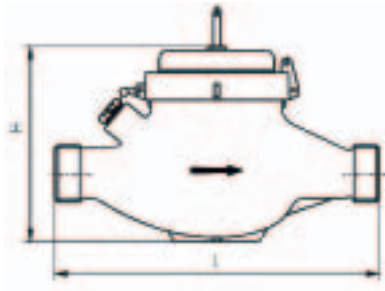
Technical data

Medium	Water
Max. temperature of medium	120°C
Nominal pressure	PN 16
Pulse value	10 l/pulse
Length of pulse cable	2 m
Ingress protection	IP 67

Pressure loss and measurement deviation



Dimensions and technical data



Short text	qp m ³ /h	DN mm	Connection G"	L mm	Threshold Q' = l/h	Kvs**	Liter / Pulse	Class H/V	Weight kg	H mm	Parts No.
Horizontal											
MTH-HWK VM 20 Qp 2.5, 120C 10L	2.5	20	G 1 B	190	< 13	5.6	10	A/-	1.7	94	93'517
MTH-HWK VM 25 Qp 3.5, 120C 10L	3.5	25	G 1 1/4B	260	< 23	12.5	10	A/-	2.5	112	93'663
MTH-HWK VM 25 Qp 6, 120C, 10L	6	25	G 1 1/4B	260	< 23	12.5	10	A/-	2.5	112	93'556
MTH-HWK VM 32 Qp 6, 120C, 10L	6	32	G 1 1/2B	260	< 23	12.5	10	A/-	2.5	112	93'518
MTH-HWK VM 40 Qp 10, 120 C, 10L	10	40	G 2 B	300	< 45	24.0	10	A/-	5.0	133	93'519
Falling pipeline											
MTH-FWK VM 20 Qp 2.5, 120C 10L	2.5	20	G 1 B	105	< 15	5.5	10	A/-	1.8	150	93'520
MTH-FWK VM 25 Qp 6, 120C, 10L	6	25	G 1 1/4B	150	< 18	12.0	10	A/-	2.9	170	93'557
MTH-FWK VM 40 Qp 10, 120 C, 10L	10	40	G 2 B	150	< 38	26.0	10	A/-	5.5	215	93'551
Rising pipeline											
MTH-SWK VM 20 Qp 2.5, 120C 10L	2.5	20	G 1 B	105	< 15	5.5	10	A/-	1.8	150	93'552
MTH-SWK VM 25 Qp 6, 120C, 10L	6	25	G 1 1/4B	150	< 18	12.0	10	A/-	2.9	170	93'558
MTH-SWK VM 40 Qp 10, 120 C, 10L	10	40	G 2 B	150	< 38	26.0	10	A/-	5.5	215	93'554

** Q' = Kvs : Flow on pressure drop = 1 bar

Approvals

Germany PTB A22 22.16/95.08
 Switzerland Metas CH-T2-05218-00
 Others on request.

Authorised Channel Partner in India

Universal
engineers

BE-200, Lane No. 6,
Hari Nagar, New Delhi -110064
Tel./Fax : 91-11-25127461, 25496072, 9958004710
GSM: 9810269366, 9810589043
E-mail: dynamic6@vsnl.com, contact@ues.net.in
www.ues.net.in

