



Pulser IN-Z61

Pulser for mechanical gas meters

Application

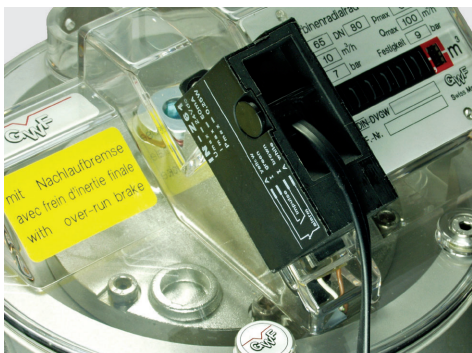
- Pulse transferral on to a control system
- Digital control and regulation

Features

- Pulser can be retrofitted without breaking the verification seal
- Tamper detection

Configuration

For Radial-Blade Turbine gas meters
EQZ / EQZK / TRZ (Order No. 82.5016)



- ☐ Documentation: Radial-Blade Turbine gas meters - DBE30100-1 / -2 / -3

Functioning principle

A pulse magnet in the register of the Radial Blade turbine meter activates a reed switch in the pulse transmitter. A second reed switch allows for the detection of magnetic tampering and interruption of the cable connection.

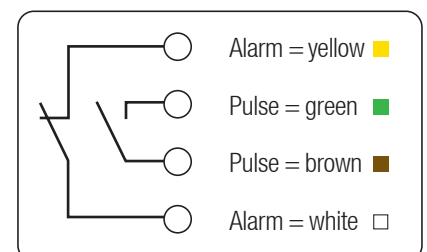
Technical Data

Service life	min 2 x 10 ⁷ Pulses
Voltage	U _{max} = 24 VDC
Current	I _{max} = 50 mA
Power	P _{max} = 0,25 W
Closing time	t _{min} = 0,25 s
Resistance (closed)	R _{max} = 0.5 Ohm
Pulse value	1 pulse = 1 m ³
Operating temperature	- 10 °C to 50 °C
Connection cable	length 1,5 m

Connection diagram

Alarm - Alarm contact, Reed switch
(normally closed)

Pulse - Totalizing contact, reed switch
(normally open)



Pulser IN-Z61
EPe30112 - 02.2007 - Subject to modification

GWF MessSysteme AG
Obergrundstrasse 119, CH-6002 Luzern
Tel. +41 41 319 50 50, Fax +41 41 310 60 87
gwf@gwf.ch, www.gwf.ch

